

# Pololu Zumo Chassis User's Guide



1. Introduction . . . . .	2
2. What you will need . . . . .	4
3. Assembling the Zumo . . . . .	5
4. Conclusion . . . . .	12

## 1. Introduction

**Attention:** If you are assembling a Zumo Robot for Arduino using the **Zumo Shield for Arduino** [<https://www.pololu.com/product/2504>], please follow the more specialized assembly instructions for that product [<https://www.pololu.com/docs/0J57>] instead of the ones in this document!

The Pololu Zumo chassis kit contains the components you need to build a small, high-performance tracked robot platform. It measures less than 10 cm on each side, making it compact enough to qualify for Mini Sumo competitions. The main body of the chassis is composed of black ABS plastic and has sockets for two micro metal gearmotors and a compartment for four AA batteries (not included), with battery terminals that protrude through the chassis and can be accessed from the top. Each side of the chassis has an idler sprocket that spins freely and a drive sprocket that connects to a motor, which together support a flexible one-piece silicone track. A black acrylic plate is included with the chassis; it holds the motors in place and can be used for mounting your electronics, such as your microcontroller, motor drivers, and sensors.

### Kit Components



- Zumo chassis main body

- 1/16" black acrylic mounting plate
- Two drive sprockets
- Two idler sprockets
- Two 22-tooth silicone tracks
- Two shoulder bolts with washers and M3 nuts
- Four 1/4" #2-56 screws and nuts
- Battery terminals



The kit includes extra nuts and washers, so do not be concerned if you have some leftover hardware after assembling your Zumo.

## 2. What you will need

In addition to the Zumo chassis kit, you will require these items to construct a working robot:

### Assembly tools

- Small Phillips screwdriver
- 3 mm Allen wrench (hex key)

### Additional required components (not included with the kit)

- Two **micro metal gearmotors** [<https://www.pololu.com/category/60/micro-metal-gearmotors>] (we recommend 100:1, 75:1, or 50:1 HP or HPCB versions)
- Four AA batteries (we recommend rechargeable **AA NiMH cells** [<https://www.pololu.com/product/1003>])
- Electronics to control the motors (e.g. the **DRV8833 dual motor driver carrier** [<https://www.pololu.com/product/2130>])

### Additional optional components (not included with the kit)

- One **basic sumo blade for Zumo chassis** [<https://www.pololu.com/product/1410>]

Please see the **product description** [<https://www.pololu.com/product/1418>] for the chassis kit for more information and recommendations about selecting these components.



You will also likely need a soldering iron to connect your motors and batteries to your electronics.

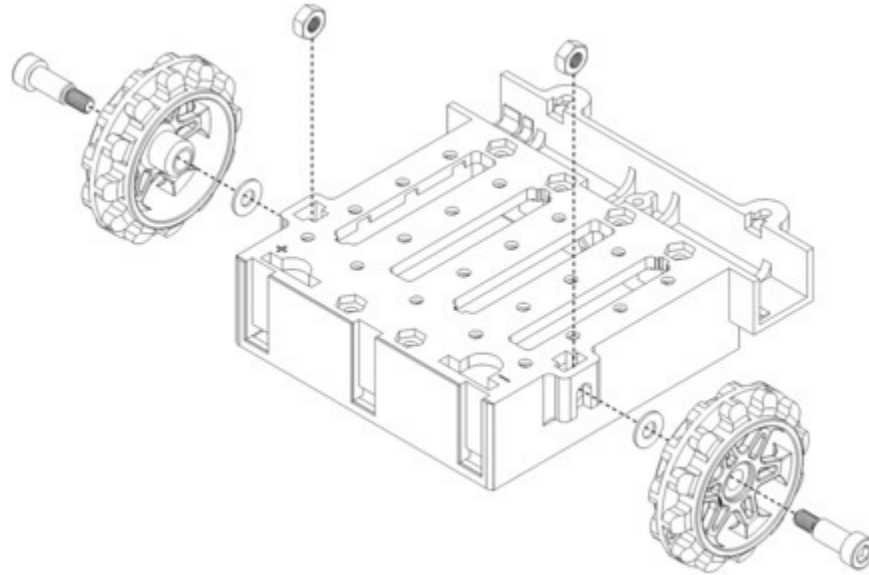
### 3. Assembling the Zumo

**Attention:** If you are assembling a Zumo Robot for Arduino using the **Zumo Shield for Arduino** [<https://www.pololu.com/product/2504>], please follow the more specialized assembly instructions for that product [<https://www.pololu.com/docs/0J57>] instead of the ones in this document!

Please follow these instructions carefully to assemble your Zumo properly.

## Idler sprockets

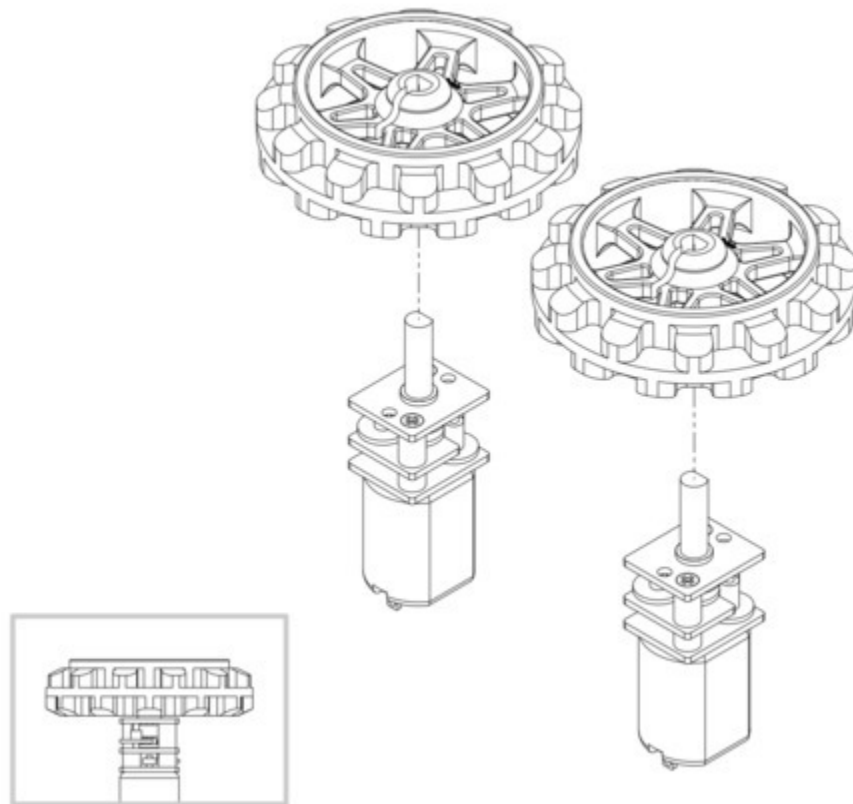
1. Place an M3 nut in each of the two side slots near the rear of the chassis. The slots are sized so that nuts will not be able to rotate within them.
2. Place an idler sprocket on each shoulder bolt, followed by a washer. The protruding side of the sprocket hub should face the same direction as the threaded end of the bolt (in toward the chassis).



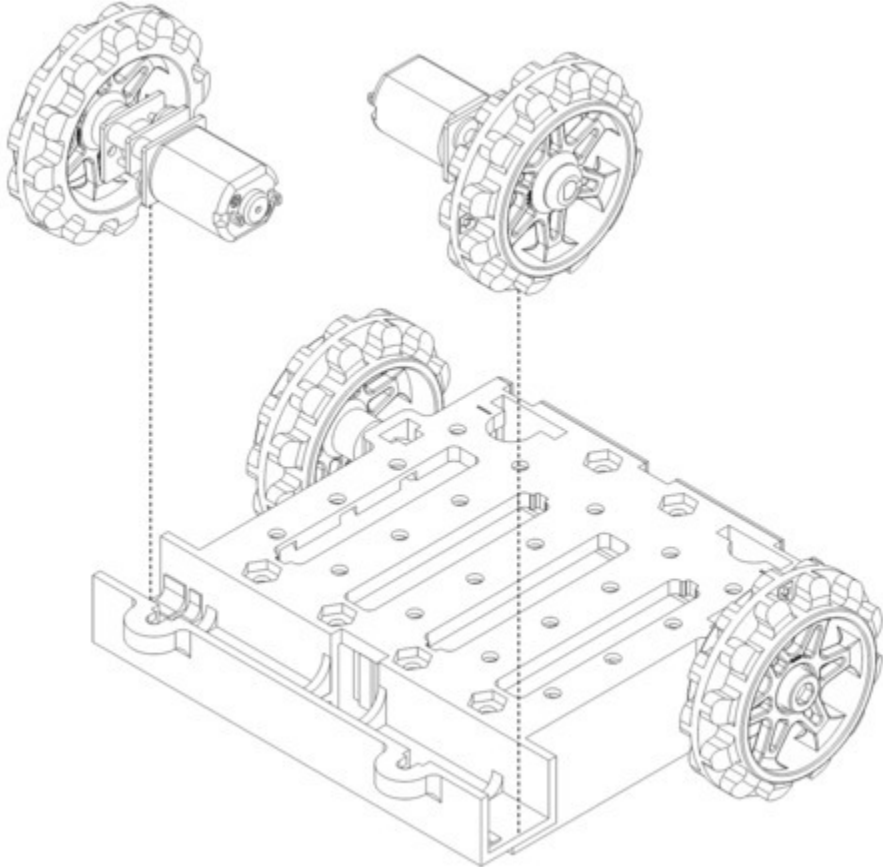
3. Insert the shoulder bolts through the side of the chassis into the nut. Use a 3 mm hex key (Allen wrench) to tighten the bolts until the washers are snug against the chassis. Be careful not to overtighten the shoulder bolts as doing so can bend the washers.

## Motors and drive sprockets

4. Solder any connections you want to make to your motors (such as wires and **bypass capacitors** [<https://www.pololu.com/docs/0J15/9>]) before installing the motors in the chassis, as you will not be able to access the motor leads easily once the acrylic mounting plate is in place.
5. Press the output shafts of the motors into the drive sprockets, with the raised lip on one side of the sprocket facing away from the motor. The end of the gearbox shaft should end up flush with the outside of the sprocket. A good way to do this is to set the wheel on flat surface (like a table top) and press the motor shaft into the wheel until it contacts the surface.



6. Place the motors into the channel in the front of the chassis, aligning the gearbox with the grooves in the channel. The front plate of the gearbox should be even with the edge of the chassis.

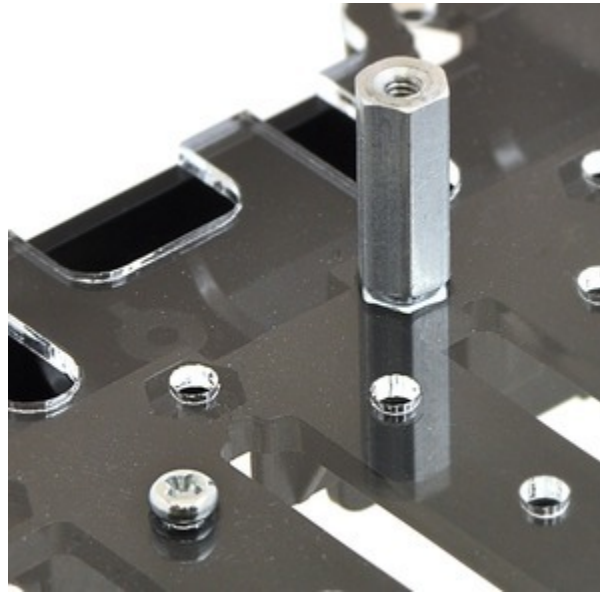




## Mounting plate

There are two types of mounting holes sized for #2-56 screws in the rear portion of the chassis:

- The middle four rows of holes have a recess for a nut on the **interior** of the chassis. These holes can be used to secure the mounting plate or other components directly to the chassis, as demonstrated by the screw on the left side of the picture below.
- The four holes along the front edge of the chassis and the two holes along the rear edge have a recess for a nut on the **exterior** of the chassis. These holes can be used to secure a component to the mounting plate alone, as demonstrated by the standoff on the right side of the picture below, allowing the mounting plate to be removed from the chassis without having to first detach the component.

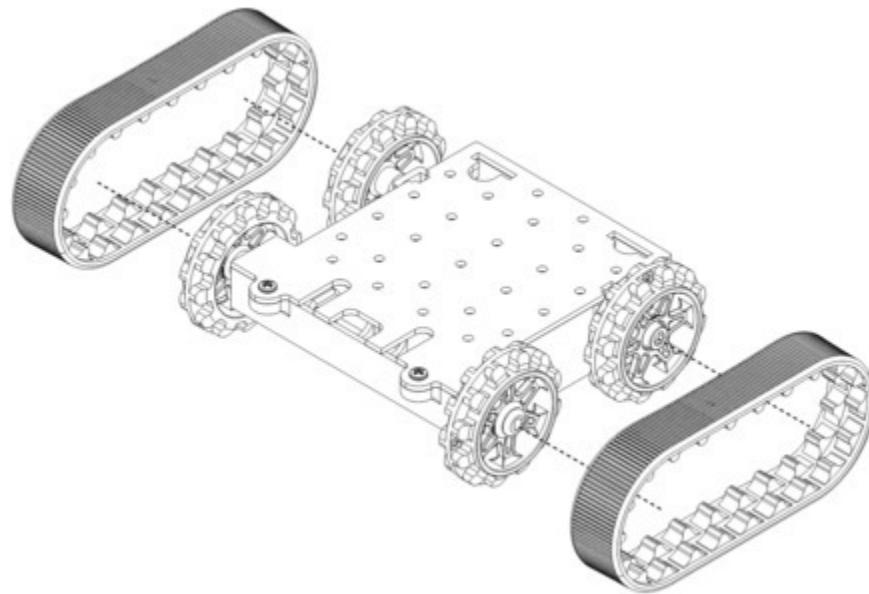


The mounting plate is secured to the chassis with screws through the two rounded tabs that protrude from the front edge, along with any number of the interior-nut mounting holes in the rear.

7. Decide which mounting holes on the chassis and mounting plate you will use. If you want to use any exterior-nut holes, place nuts in the corresponding recesses on top of the chassis.
8. Peel the protective masking off the plate and place it on top of the chassis such that the cut-outs for the battery terminals match those on the chassis below. To get the front of the plate under the drive sprockets, you will need to angle it and slide one side in first.
9. In each of the two front tabs and your choice of the interior-nut holes along the rear, insert a #2-56 machine screw through the mounting plate and chassis and tighten it against a nut inside the chassis. You can line up the nut by feel, or you could try temporarily taping the

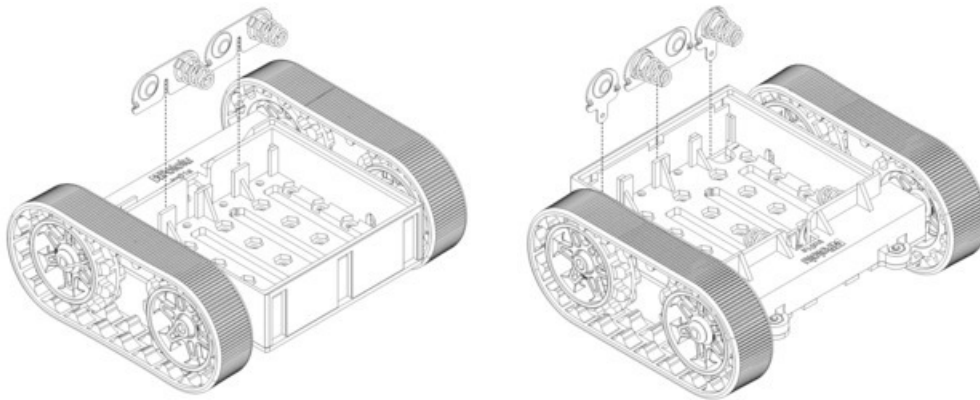
nuts inside the recesses in the chassis. **Note:** if you are also adding a **basic sumo blade** [<https://www.pololu.com/product/1410>], you should place its mounting tabs on top of the acrylic mounting plate so that its holes line up with the two front-tab holes and use the #2-56 machine screws to mount both the blade and the acrylic mounting plate to the chassis. *Do not try to adjust the angle of the sumo blade while it is mounted to the chassis as this can crack the acrylic mounting plate.*

10. At this point, you can add the silicone tracks by stretching them around the sprockets on each side of the chassis, or you can leave this for the final step.



## Battery contacts

11. Turn the chassis over and install the battery terminal contacts as shown in the diagrams below. Note that the two individual contacts should be inserted into the chassis so that their solder tabs protrude through the holes in the top of the chassis and can be accessed from the exterior. You might want to use some glue (hot-melt adhesive works well) or double-sided tape to hold the two individual contacts in place if you will not be soldering them to something rigid.



12. Insert four AA batteries (the cut-out slots in the battery holder indicate the proper battery orientation) and snap the battery cover onto the bottom of the chassis.

## 4. Conclusion

You are now ready to add some electronics, such as **motor drivers** [<https://www.pololu.com/category/11/brushed-dc-motor-drivers>], **programmable controllers** [<https://www.pololu.com/category/64/development-boards-programmable-controllers>], and **sensors** [<https://www.pololu.com/category/7/sensors>], to your Zumo chassis to get it moving and turn it into a functional robot!



Have you built a robot with the Zumo that you would like to share? Please join us on our **robotics forum** [<https://forum.pololu.com/>] to ask questions, give feedback, or share your projects. We would love to hear about your experiences with the Zumo!